

Cokin

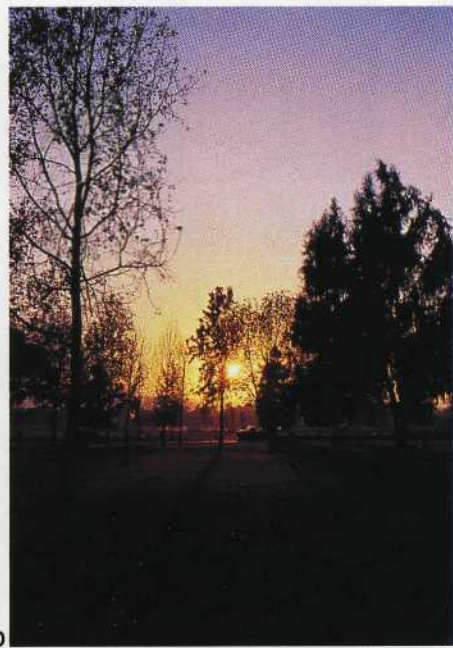
CREATIVE FILTER SYSTEM



209

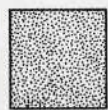
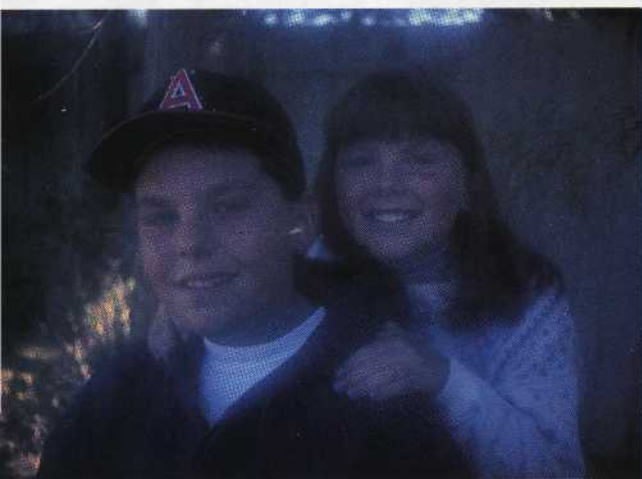
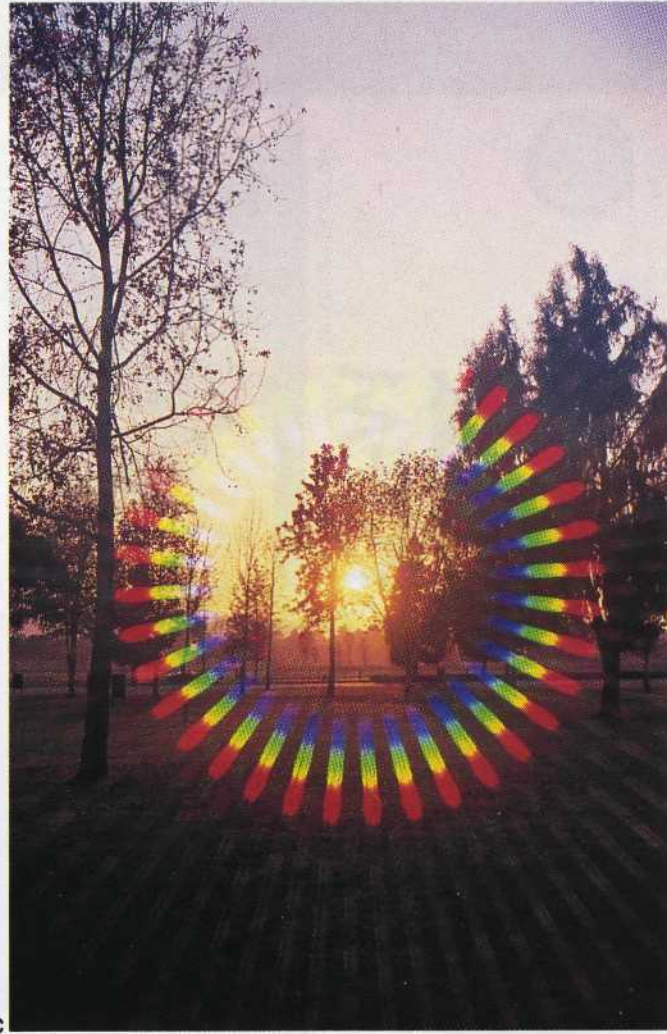


042



1b

1c



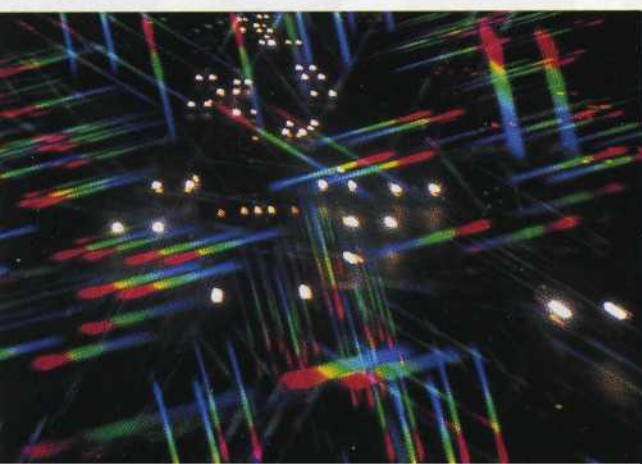
087



345



3



- 1a.,b.,&c.** Variations on a sunset scene (1b), created with the Cokin Multi-Parallel 209 filter (1a), and the Diffraction Galaxy 042 (1c).
- 2.** The Cokin Pastel 2 filter 087 lends a pleasant soft look to this portrait.
- 3.** A double exposure with the Cokin Double Mask 345 places a pretty lady in a pretty environment.
- 4.** Two Diffraction Cosmos 040 filters at right angles add color to freeway traffic.
- 5.** The Graduated Gray filter 120 gives the sky a rich hue.





PHOTO BY MIKE STENSVOLD



PHOTOS BY AMY STONE



196

1. Cokin's Dreams 2 filter 092 adds just the right touch to this park scene.

2a.&b. Three big buildings (2b) receive a touch of magic from the Rainbow 2 filter 196 (2a).

3. Placing both the Fog 1 (150) filter and the Diffuser 1 (083) filter over the lens softens the image and reduces contrast.

4a.&b. How do you turn a shoreline into an island? Here, by using Cokin's Double Exposure mask 346 to copy the left half of the original slide (4b), then reversing the slide in the copier and the mask on the lens to copy it again (4a).

5. Cokin's Diffuser 1 083 filter softens the image without reducing contrast, for a pleasant glowing effect.

2a



092



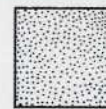
2b



346



3



083



150



5



2b

170



160



170

2c



160



170



PHOTOS BY JACK AND SUE DRAFAHL



5b



PHOTOS BY JACK AND SUE DRAFAHL

7a



8



057

9a



PHOTOS BY JACK AND SUE DRAFAHL



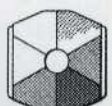
PHOTOS BY BILL HURTER

7b



346

9b



202